

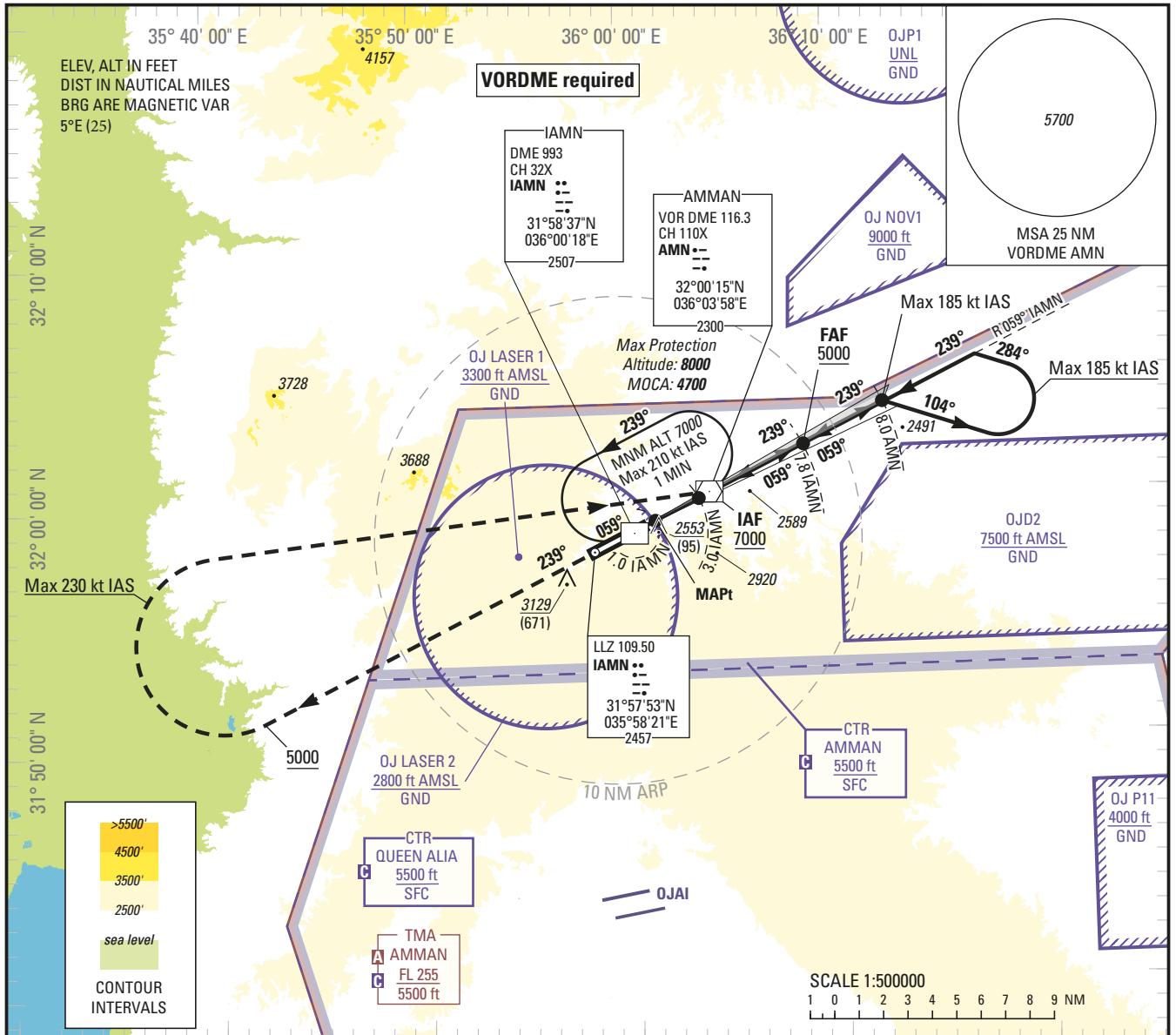
**INSTRUMENT  
APPROACH  
CHART — ICAO**

**AERODROME ELEV 2555 ft**  
HEIGHTS RELATED TO  
THR RWY 24 — ELEV 2458 ft

APP 128.9  
TWR 118.1

**AMMAN/Amman City Airport (OJAM)**

**ILS Y RWY 24**



NM TO DME	IAMN	1	2	3	4	5	6	7	TRANSITION ALTITUDE 13000 TRANSITION LEVEL FL 150
ALTITUDE		2770	3090	3420	3740	4070	4400	4730	

**MISSED APPROACH:**  
Climb on runway heading **239°M**. At **5000** (2542), turn **right** direct to **AMN VORDME** (Max **230 kt IAS**), climbing to **7000** (4542) and hold or follow ATC instructions. Hold at **AMN VORDME** Max **210 kt IAS**.

ILS RDH 49  
THR ELEV 2458

NM to IAMN DME	0	1.0	3.0	3.5	7.8
NM to THR RWY 24	0	0.8	2.8	3.3	7.7

OCA (H)		A	B	C	D/DL											
Straight-in Approach	Cat I 2.5%	2680 (230)	2690 (240)	2710 (250)	2720 (260)	GS	kt	70	85	100	115	130	145	160	185	
	Cat I 3.0%	2660 (200)					2680 (220)	min:s	5:51	4:49	4:06	3:34	3:09	2:50	2:34	2:13
	GP INOP 2.5%	2800 (350)						Rate of descent 5.2%	ft/min	370	450	530	610	680	760	840
Circling		NOT AUTHORIZED														

CHANGE: Name of the AD